



STRETCHMATE

StretchMate® Replacement Cord Assembly Instructions

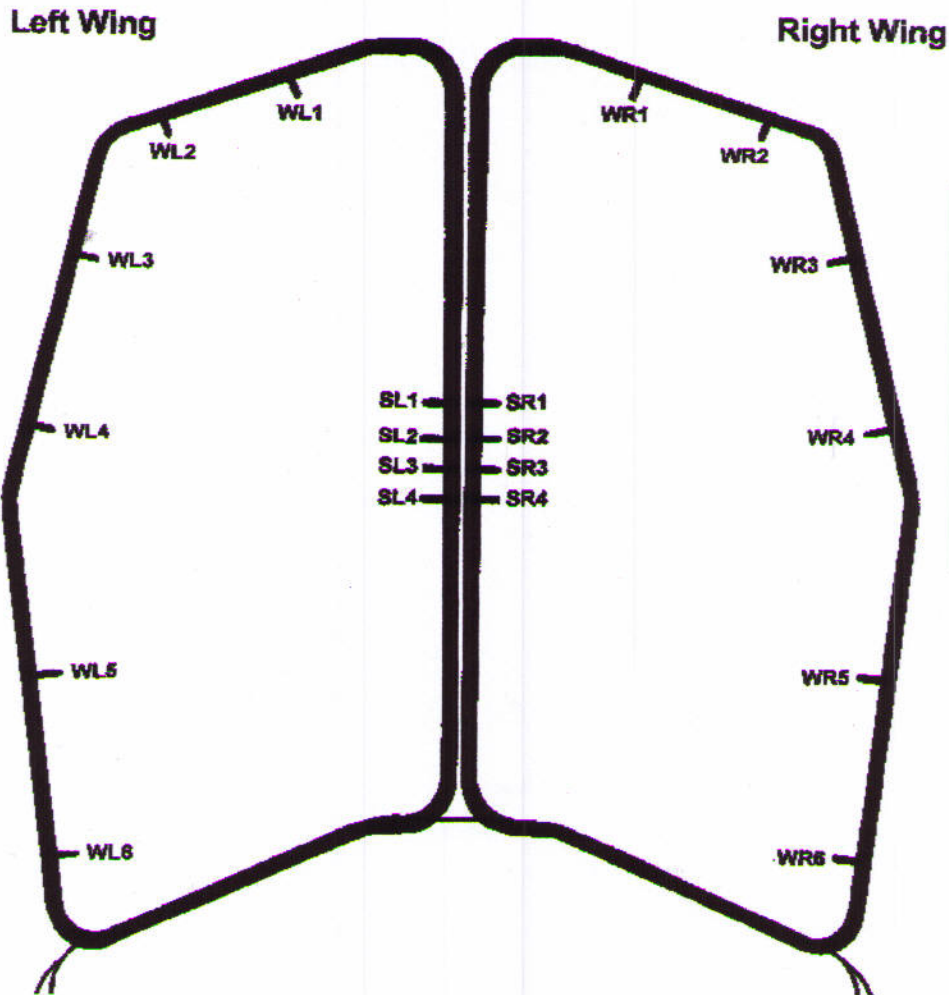
Included: (2) Replacement Cords
(1) Allen Wrench

Required: (2) Vice Grips
(2) Cloths (place soft cloth inside teeth of vice grip to protect cord from damage)
(2) People

Note: It is advisable to remove and replace only one cord at a time, leaving the second still on. This will allow you to see correct placement of cord through the loops on the frame.

Removal

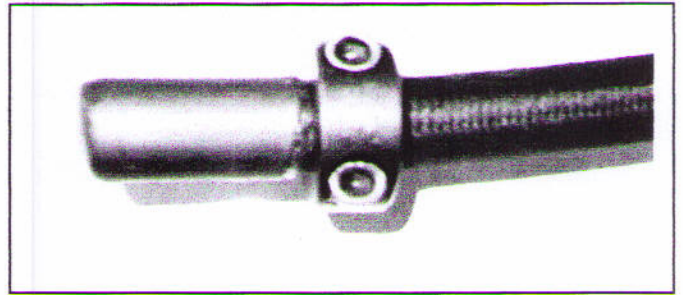
At one of the four terminal locations of the cord, pull cord through an extra 2-3" and place vice grip with cloth on between shaft collar and loop (this will allow you to easily remove shaft collar). Once the first shaft collar has been removed, replace it on the new cord. Slowly release vice grip while holding the cord (this will prevent the tense cord from snapping). Pull the old cord out of frame.



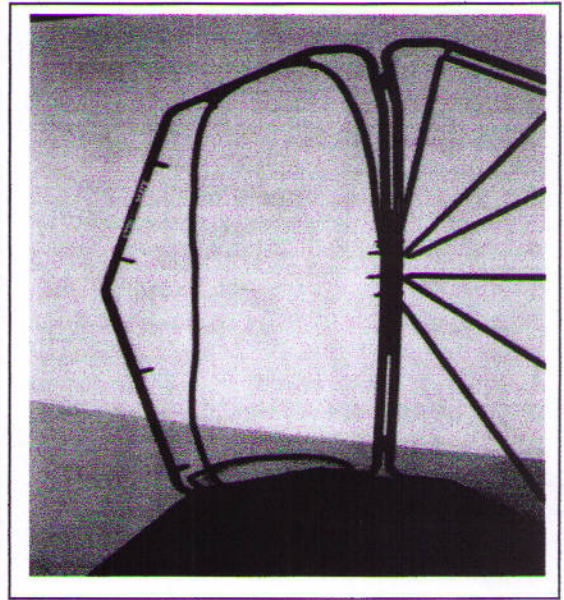
StretchMate Replacement Cord Assembly Instructions – Cont.

Replacement

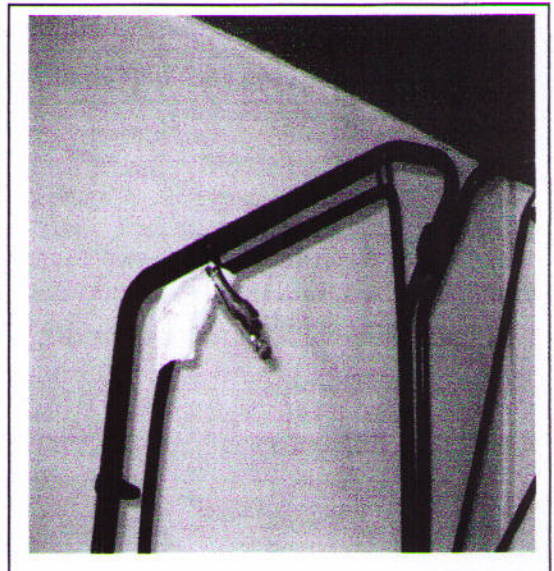
1. Starting with the Left Wing, remove both collars (shown) from the old cord. Put one collar on the end of the new cord adjacent to end cap. Use Allen wrench provided.



2. Feed the un-collared end of the cord through SL1 (see diagram) from the bottom up, then through WL1 and WL2 until the collar meets the bottom side of SL1.

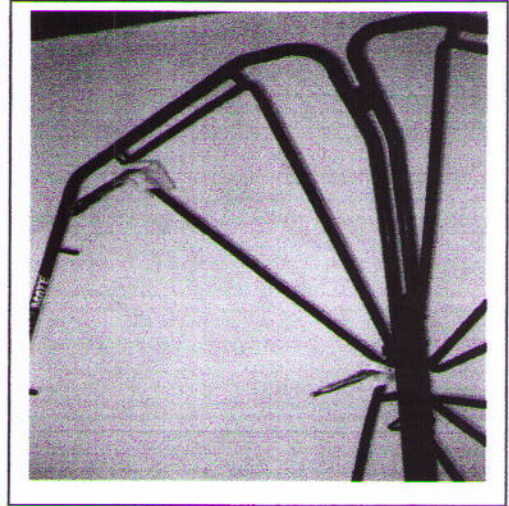


3. Have one person pull the cord tightly while the second person clamps on the outside edge of WL2.

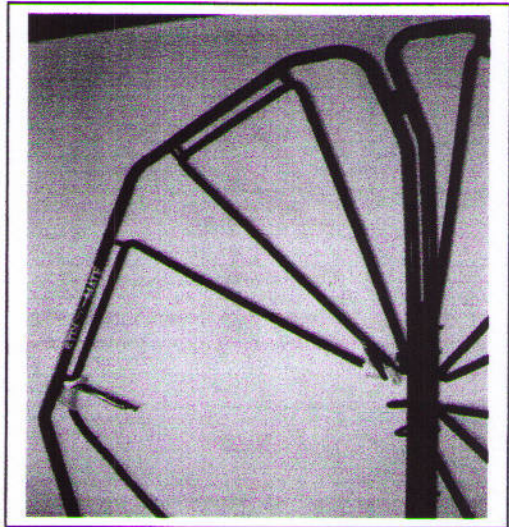


StretchMate Replacement Cord Assembly Instructions – Cont.

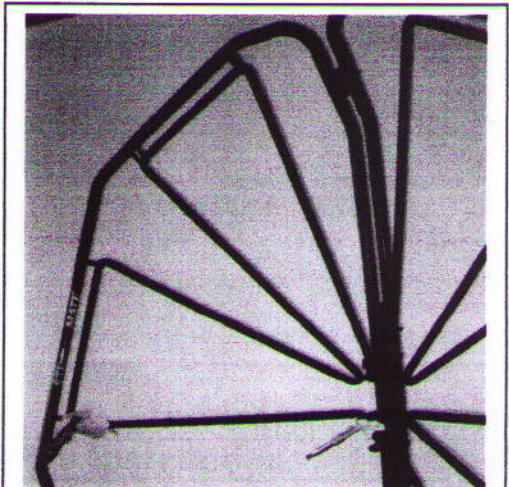
4. Continuing feeding the cord through SL2, pull cord tightly through and repeat clamping procedure.



5. Remove the clamp from WL2.
6. Feed the cord through WL3 and WL4, pull cord tightly and clamp again.

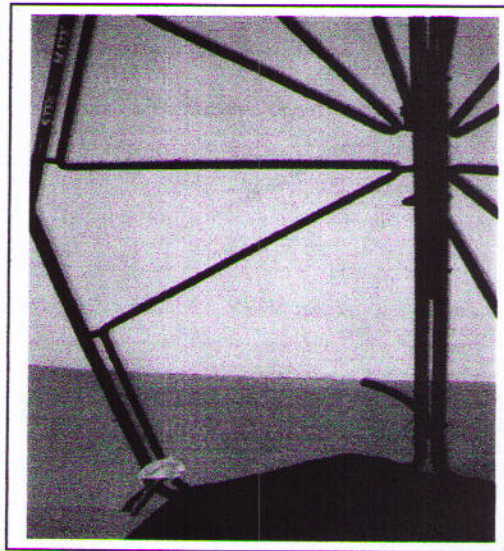


7. Remove the clamp from SL2 and feed the cord through SL3, pull cord tightly and clamp.

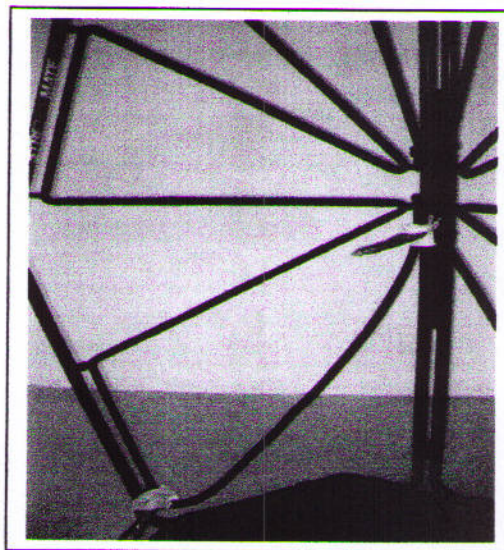


StretchMate Replacement Cord Assembly Instructions – Cont.

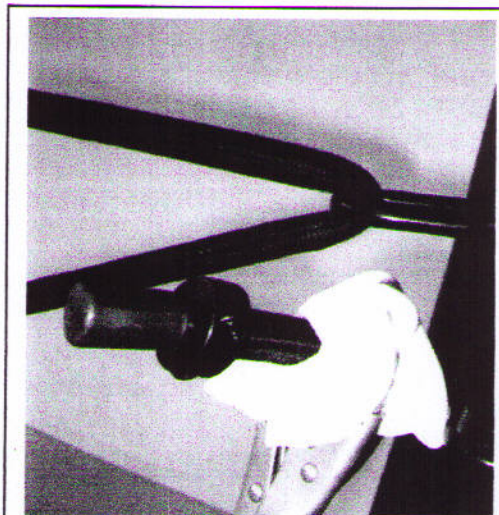
8. Remove the clamp from WL4.
9. Feed the cord through WL5 and WL6, pull cord tightly and clamp.



10. Feed the cord through SL4 from the bottom leaving at least 2" excess, then clamp. Note: The cord has been pre-cut to the correct length.



11. Take the second collar from the old cord and install at the end of the new cord above SL4.



StretchMate Replacement Cord Assembly Instructions – Cont.

12. Grab hold of the cord below SL4, pull up and gently release vice grip.
13. Press foot down firmly on the cord below WL6, then slowly release the vice grip.
14. Adjust tension on each length to be sure that the cord tension is evenly distributed throughout the entire length of cord.
15. Repeat instructions for the Right Wing.

